

#-----PLEASE NOTE-----#
This file is the author's own work and represents their #
interpretation of the song. You may only use this file for #
private study, scholarship, or research. #
#-----#

Love Shack

B-52's

The Basic Ingredients :

Song Parts.

Chord Pattern 1. Used for the intro.

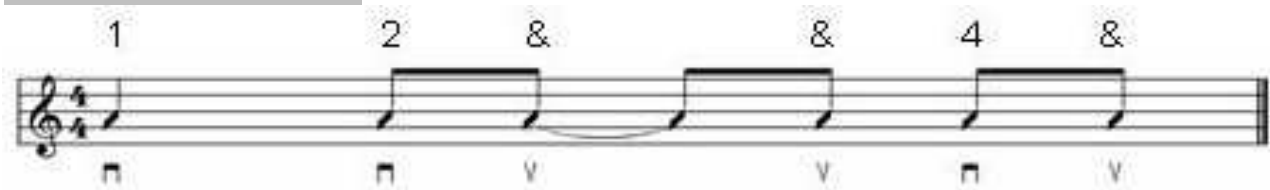
| C Gm7 | |

Chord Pattern 2. Used for the verse.

| C | Eb | F | Ab |

Suggested Strum.

Fast strum number 3.



Chord Shapes.

Bar chords.

Love Shack

B-52's

INTRO.

Drums	%	%	%	
Drums	%	%	%	If you
see a faded sign at the	side of the road that says	fifteen miles to the	Love	Shack
C Gm7		C Gm7		
The Love Shack yeah yeah				I'm
C Gm7		C Gm7		
heading down the	Atlanta high -	way		looking for the
C Gm7		C Gm7		
love	get away	heading for the love	get away.	I

VERSE 1.

C Gm7		C Gm7		
got me a car				
C Gm7		C Gm7		
got me a Chrysler				

CHORUS 1.

C	Eb	F	Ab	
Love Shack is a	little old place where	we can get	to - gether.	
C Gm7		C Gm7		
Love Shack baby			Love Shack baby	
C Gm7		C Gm7		
Love Shack baby, Love	Shack	Love Shack baby, Love	Shack	
C Gm7		C Gm7		
Love Shack baby, Love	Shack	Love Shack baby, Love	Shack	

VERSE 2.

C Gm7		C Gm7		Gm7	
Sign says	stay away fools	love rules	at the	Love Shack.	Well it's
C (Stop) Gm7	C (Stop) Gm7	C (Stop) Gm7	C (Stop) Gm7	C (Stop) Gm7	
set way back in the middle					
C Gm7		C Gm7			
Glitter on the mattress		glitter on the highway			
C Gm7		C Gm7			
glitter on the front porch		glitter on the highway			

CHORUS 2.

C	Eb	F	Ab	
Love Shack is a	little old place where	we can get	to - gether.	
C Gm7		C Gm7		
	Love Shack baby		Love Shack baby, Love	
C Gm7		C Gm7		
Shack that's	where it's at, Love	Shack that's	where it's at,	

VERSE 3.

C Gm7		C Gm7		
Hugging and a kissing				
C Gm7		C Gm7		
whole shack shimmies	Yeah, the	whole shack shimmies		
C Gm7		C (Stop for 2 bars)		
whole shack shimmies when	everybody's moving around	and around and around		
C Gm7		C Gm7		
Everybody's moving, Every	body's grooving, baby			
C Gm7		C Gm7		
Everybody's moving, Every	body's grooving, baby	Funky little shack, Fun -	ky little shack.	

SOLO 1. **Guitar.**

C Gm7		C Gm7		
C Gm7		C Gm7		

VERSE 4.

C Gm7		C Gm7		
Hop in my Chrysler, it's as	big as a whale.			
C Gm7		C Gm7		
got me a car it	seats about twenty			

CHORUS 3.

C	Eb	F	Ab	
Love Shack is a	little old place where	we can get	to - gether.	
C Gm7		C Gm7		
	Love Shack baby		Love Shack baby	
C Gm7		C Gm7		
Love Shack baby, Love	Shack	Love Shack baby, Love	Shack	
C Gm7		C Gm7		
Love Shack baby, Love	Shack	Love Shack baby, Love	Shack	

SOLO 2. **Bass and drums.**

C Gm7		C Gm7		
C Gm7		C Gm7		

MIDDLE.

Part 1.

C

Bang

Gm7

bang

bang

on the door baby

C

Bang

Gm7

bang

bang

on the door baby

C

Bang

Gm7

bang

bang

on the door baby

C

Bang

Gm7

bang

bang

on the door baby

C (double accent)

Gm7

Knock a little louder baby

C (double accent)

Gm7

I can't hear you

C (double accent)

Gm7

Knock a little louder sugar

C (double accent)

Gm7

I can't hear you

Part 2.

C

Bang

Gm7

bang

bang

on the door baby

C

Bang!

Gm7

Bang!

on the door baby

C

Bang!

Gm7

Bang!

on the door baby

C (Stop)

what?

Tin

roof.

Rusted.

C

Bang

Gm7

bang

bang

on the door baby

C

Bang!

Gm7

Bang!

on the door

C

Bang!

Gm7

Bang!

Your

CHORUS 3.

C

Love

Gm7

Shack

baby,

Love

Shack

C

Love

Gm7

Shack

baby,

Love

Shack

C (Drum fill)

C (Stop)

C

Love

Gm7

Shack

baby,

Love

Shack

C

Love

Gm7

Shack

baby,

Love

Shack

slow down